

SINGER® PROJECTS

Retro Denim Fold-over Backpack

PROJECT SKILL LEVEL: ■■■■



Shopping List

Everything you need to complete this project in one place. Use this convenient checklist to ensure you have all required materials in your sewing room, or take it with you while you shop for supplies.

- SINGER® Heavy Duty Sewing Machine
- SINGER® Heavy Duty Machine Needles
- Old/Worn Denim Jeans and/or Denim Fabric (If you're using old jeans cut open up side seams & cut pant legs off and cut into smaller pieces.)
- ½ yd Coordinating Lining Fabric
- 3.5 yds of Cotton Webbing - 3" wide
- 2 yds LightWeight Single Sided Fusible Interfacing
- Coordinating Sewing Thread
- 14" or Larger Zipper
- x3 D-Rings
- x1 Swivel Snaphook
- x2 Slide Buckles
- SINGER® Zipper Presser Foot
- SINGER® Open Toe Presser Foot
- SINGER® Even Feed / Walking Presser Foot
- SINGER® Quarter Inch Piecing Presser Foot
- Cutting Mat
- Straight Edge Ruler
- Rotary Cutter
- SINGER® SteamCraft Steam Iron
- Ironing Board
- Straight Pins and/or Clips

Cutting Instructions:

- Front Section: x1 - 14 ½" x 17"
- Back Section: x1 - 14 ½" x 14 ¼"
- Back Fold Over Section: x1 - 14 ½" x 3 ½"
- Front & Back Bottom Section: x2 - 14 ½" x 5 ½"
- Lining: x2 - 14 ½" x 21 ¾"
- Zipper Tabs: x2 - 2" x 1"
- Cotton Webbing Cuts:
 - Shoulder Straps: x2 - 40"
 - Bottom D-Ring Loops: x2 - 3 ½"
 - Handle Loop: x1 - 12"
 - Swivel Hook Loop: x1 - 5 ½"
 - Front D-Ring Loop: x1 - 12 ½"

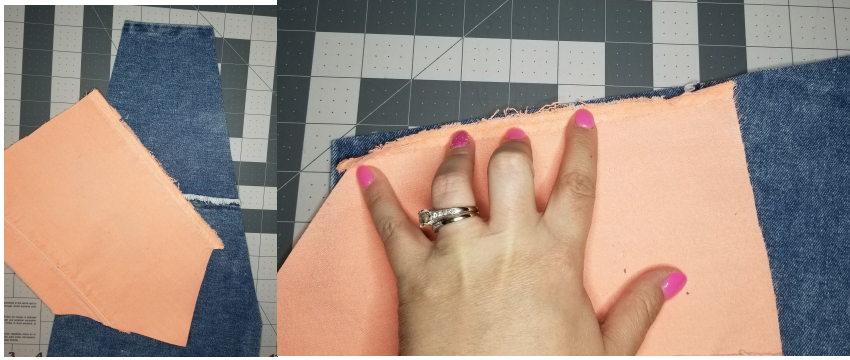
Ironing Instructions:

- Fuse lightweight fusible interfacing to all fabric pieces once cut to size.

Project Steps:

1. Gather materials.
2. Attached the SINGER® Even Feed / Walking Presser Foot & put in a SINGER® Heavy Duty Machine Needle.
3. Take two pieces of the denim fabric & sew the straight edges together using a ¼" seam allowance.
Pro-Tip: Don't over think the pieces of denim, you'll most likely end up cutting them in half. We're going for a scrappy quilt look.

Pro-Tip: Since the walking foot doesn't have a ¼" mark to guide the fabric along, make use of the red ¼" line on the bobbin cover...how convenient!



4. Continue this process of adding different sizes & shapes of denim fabric until you build up a good size. We added 4 to 5 different pieces together.



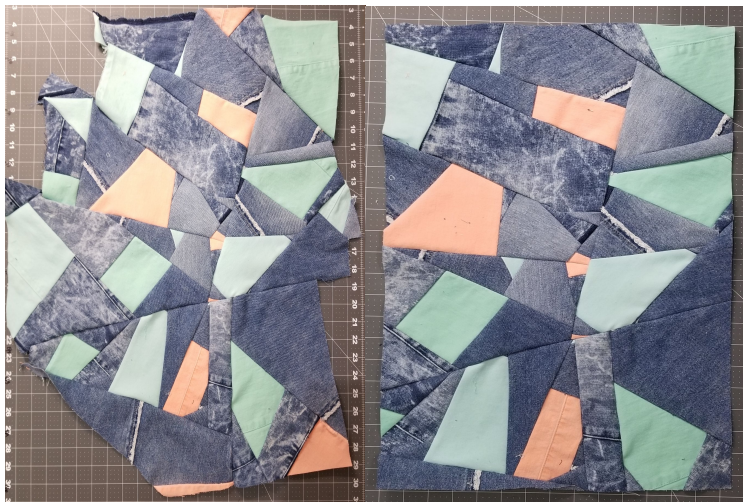
5. Continue this process creating 4-5 different sets of combinations. Again don't over think sewing the pieces together, I'll all come together in the end.
6. You'll then take your straight edge ruler & cut to have a straight edge along two of the bigger sections you've created. You'll notice the fabric underneath the ruler is all jagged & won't match up with another straight edge.



7. Take those two pieces & line up the new straight edge.



8. Sewing them together with a $\frac{1}{4}$ " seam allowance to create a larger scrappy section.
9. Continue this process until you have a piece large enough pieces to cut out a front section, back section or back fold over section.



Pro-Tip: After we cut out the piece we needed from the first large scrappy section. We used the cut off pieces & added them to the second large scrappy section. We tried to reduce as much waste as possible.

10. Using the SINGER® SteamCraft Steam Iron press all the seams well.



11. Take the two D-Ring loops (3 ½” long), two D-Rings & a few clips or pins. Place one strip into one D-Ring & clip or pin in place. Repeat with the second set. Set aside.



12. Take the two shoulder straps (40” long), two slide buckles & a few clips or pins.



13. Take the end of one strap & weave it through one slide buckle.



14. Fold the raw edge over 1" & fold over again on itself. Clip in place.



15. Sew down in place.



16. Repeat with the second set.

17. Take those two shoulder strap sets & the two D-Ring sets previously set aside.
Take one shoulder strap & feed the other raw edge end through one D-Ring set.



18. Feed the raw edge end back through the slide buckle.



19. Repeat with the second set.

20. Take the swivel hook loop (5 1/2"), the swivel hook & a clip or pin. Place the strap through the end of the swivel hook & clip to hold.



21. Take the back section & back fold over section. Find the top center of the back section & clip or pin the swivel hook loop to the center.



22. Take the two shoulder straps & clip or pin the raw edge to either side of the swivel hook loop.



23. Take the handle loop & clip or pin to either side of the shoulder straps.



24. Sew them down using a 1/4" seam allowance.



25. Place the back fold over section right side down lining up the edges & clip or pin in place.



26. Sew together with a $\frac{3}{8}$ " seam allowance.



27. Fold open & top stitch down under all of the straps & loops.



28. Take back section & one of the front & back bottom section. Place the bottom section right side down along the bottom edge of the back section & pin or clip.



29. Sew together with a $\frac{3}{8}$ " seam allowance.

30. Press open & top stitch down. Set aside.



31. Take the bottom of the shoulder straps and the bottom D-Ring loops & line them up just below the seam you just top stitched down.



32. Sew the down with a $\frac{1}{4}$ " seam allowance.



33. Take the front D-Ring loop along with the 3rd D-Ring. Place one raw edge end through the D-Ring.



34. Fold over the raw edge 1", fold over again on itself & clip or pin in place.



35. Sew down to form a box.



36. Take the front section, the other front & back bottom section & the front D-Ring loop section you just created. Find the center of the bottom of your front section & clip or pin the front D-Ring loop section in place. Sew in place with a 1/4" seam allowance.



37. Take the back bottom section & place it right side down lining up the raw edges, clip or pin in place.



38. Sew together with a $\frac{3}{8}$ " seam allowance.

39. Press open & top stitch down.



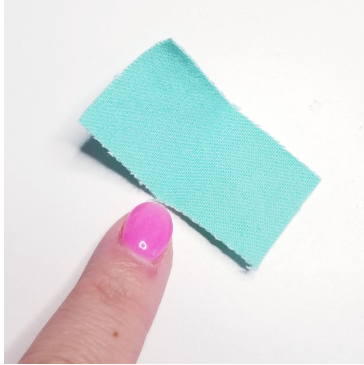
40. Take both the front & back main piece along with the two lining pieces & cut $1\frac{1}{2}$ " squares in on both bottom corners.



41. We didn't want to waste the pockets from our jeans so we cut them down with a $\frac{1}{4}$ " seam allowance all the way around. We then used a satin/zigzag stitch to sew them in place. The SINGER® Open Toe Presser Foot is great for sewing a satin/zigzag stitch!



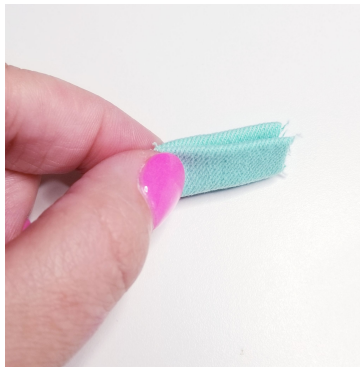
42. Take the two zipper tabs & press in half.



43. Fold the short sides into the center & press.



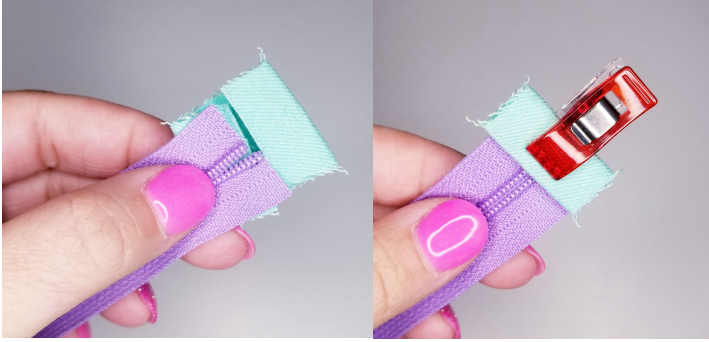
44. Fold this entire piece in half again.



45. Repeat steps 40-42 with the second zipper tab.



46. Take the zipper & trim down to 13 3/4" long.
47. Place one folded zipper tab on each end of the zipper & clip to hold in place.



48. Sew down each end with 1/8" seam allowance.



49. Take the front section, one lining piece & the zipper you just added the tabs to. Place the lining section right side up, add the zipper to the top edge right side up as well. Place the front section right side down again lining up the top edge of all three, clip or pin in place.



50. Using the SINGER® Zipper Presser Foot sew the zipper to the front section & lining.



51. Fold open and top stitch down through all the layers.



52. Repeat steps 48-50 with the back section & second lining piece.



53. Lay out the bag so that the outer pieces of the bag are touching right sides together as well as the lining pieces.

54. Make sure that the center seams by the zipper match up. Pin or clip together to hold in place. The bottom corners that were cut out in step 39 should also line up evenly.

Pro-Tip: Unzip the zipper so that when turning you'll be able to turn the bag completely right side out.



55. Sew all the way around leaving a large enough opening on the lining pieces to be able to turn the bag right side out. Do not sew the corner right angles, they will be "boxed" next.

Pro-Tip: Stitch back & forward at the beginning & end to keep the stitches from breaking when turning right side out.



56. To box the corners use both hands to pull apart the corner, as you are doing this it will create a little peak at the corner edge. Line up the side seam with the bottom seam. Use a clip or pin to hold the boxed corner in place.

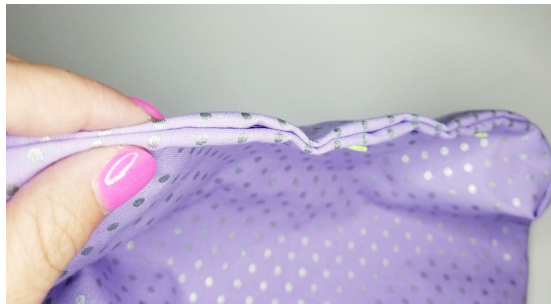
57. Sew a $\frac{1}{4}$ " seam allowance along the edge



58. Repeat steps 55-56 for the other 3 corners.

59. Next is the exciting part of this whole process...turning the bag right side out to see the almost complete bag!

60. Press the raw edges of the lining pieces inward. Clip or pin in place together.



61. Close together with a blind stitch or sew closely to the edge.

62. Push the lining piece back into the back making sure the corners are pushed into the main bag corners.

